



RoHS

TOPTEK®
HARDWARE ELECTRONIC MANUFACTURER



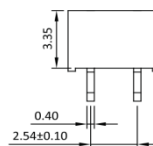
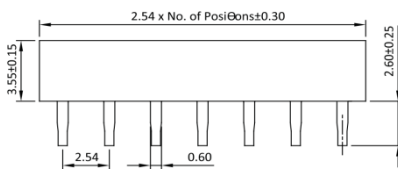
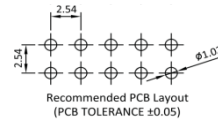
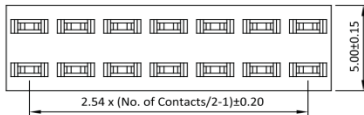
Female Header 2.54mm 2 Row H=3.55mm Y Contact Straight

Specifications

Current Rate:3 AMP
Insulation Resistance:1000MΩ Min.
Contact Resistance:20mΩ Max.
Dielectric Voltage:1000V AC for one minute
Operation Temperature:-40°C to +105°C

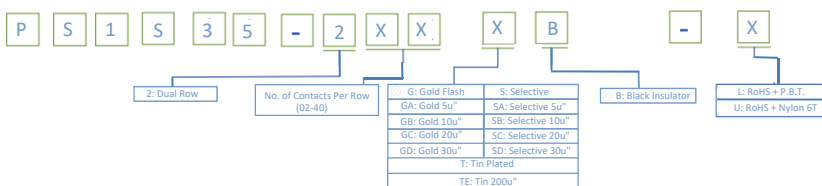
Material

Insulator:Hi-Temp. Thermoplastic, UL 94V-0
Terminal:Copper Alloy
Plating:Gold Plated



Part No.:PS1S35-2XX-X

ORDER INFORMATION



◎:Standard Recommend

